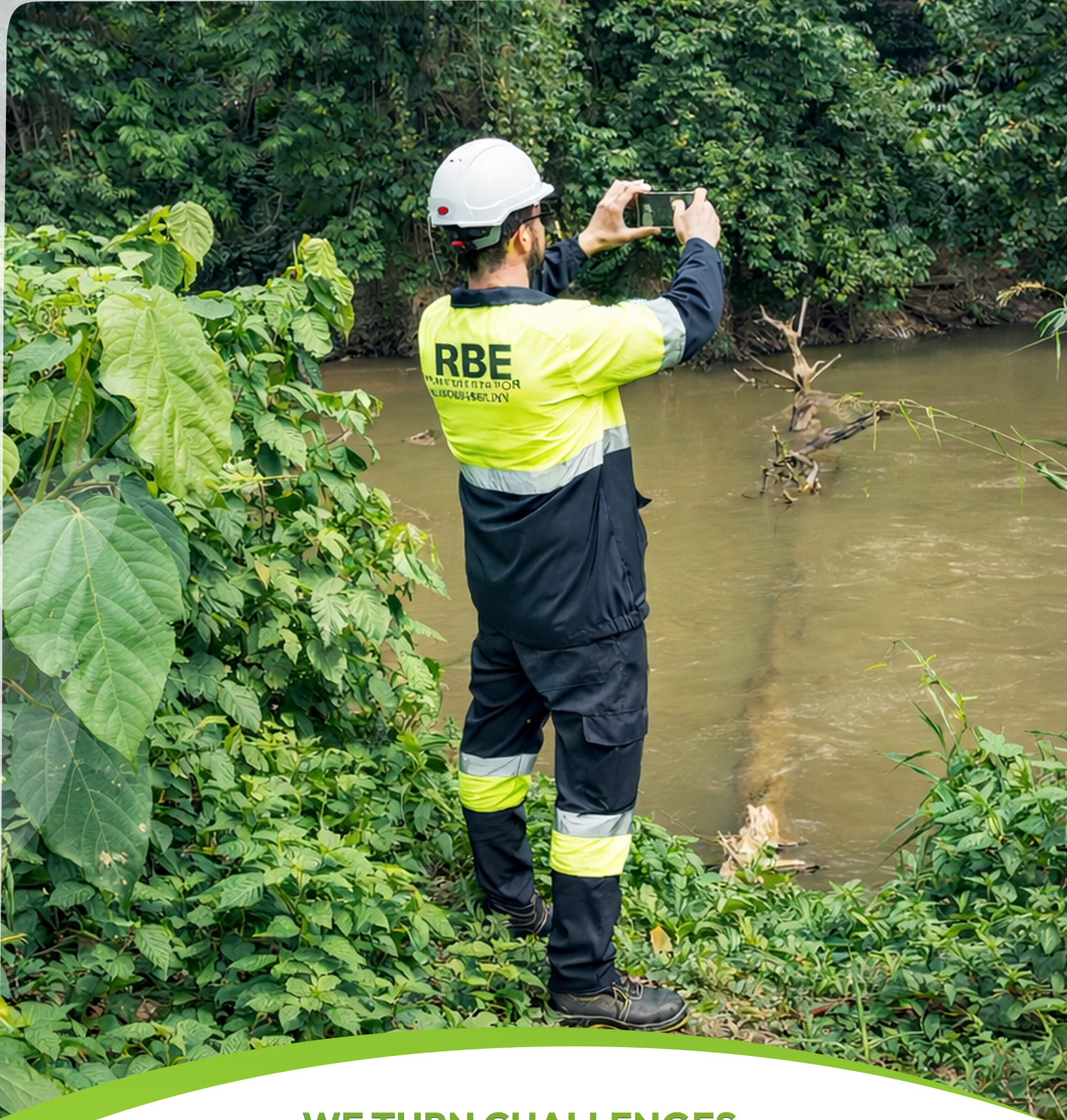




**YOUR PARTNER
FOR SUSTAINABILITY**



**WE TURN CHALLENGES
INTO SUSTAINABLE SOLUTIONS**

RYADA BUSINESS ENGINEERING
Environmental & Sustainability Consulting



ryada-be.com



YOUR PARTNER FOR SUSTAINABILITY



Who We Are :

An Engineering Firm Dedicated to Environmental Excellence

Ryada Business Engineering -RBE- is an engineering firm specialized in supporting projects with a strong environmental component.

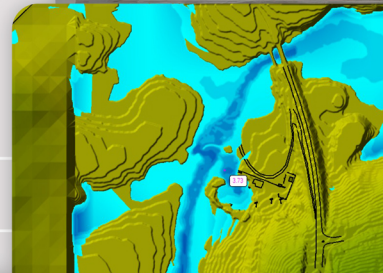
We operate as:

- Environmental Engineering Experts
- Specialists in Ecological Transition
- Technical partner and facilitator of sustainable projects



Our Mission :

We support public and private organizations from initial diagnosis and needs identification to the design, development and implementation of sustainable solutions aligned with international standards.



Our Approach

We ensures technical rigor, regulatory compliance and measurable environmental performance at every stage of the project lifecycle.



Sectors of Intervention :

- Mining
- Industry
- Municipal & Urban Development

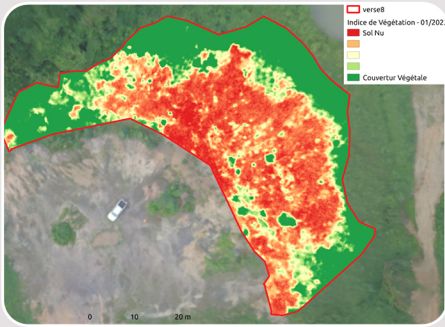
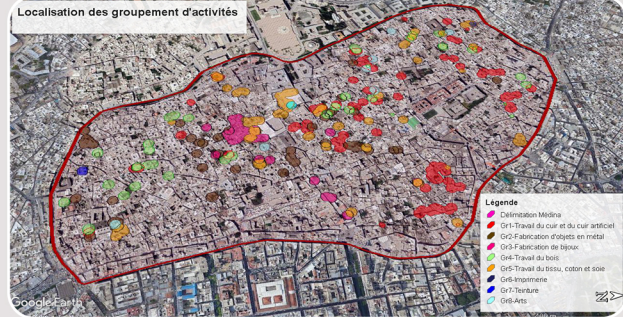




Core Areas of Expertise

Ecological Transition & Resilience

- Action plans for ecological transition
- Sectoral & territorial roadmaps
- Decarbonization strategies & circular economy

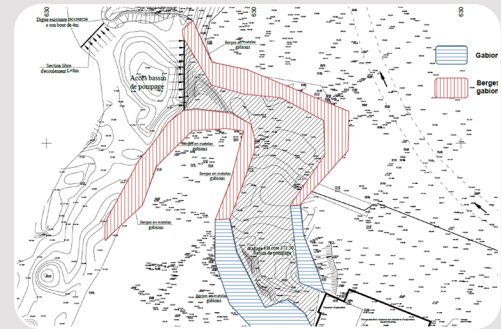


Impact, Risk & Compliance Management

- Environmental & Social Impact Assessments (ESIA)
- Management plans & hazard studies Regulatory audits & ISO
- 9001/14001/45001 support

Waste, Water & Infrastructure Solutions

- Waste management, treatment, and site rehabilitation
- Circular solutions & energy recovery Wastewater
- Treatment & Hydrological Studies



Engineering Support & Partnerships

- Local specialist & consortium support
- Technical support within international consortiums
- Training, coaching & project supervision

Our key clients and partners :





Selected Recent References

• ACTION PLANS FOR ECOLOGICAL TRANSITION

Project	Client	Country	Year
Ecological transition action plan — Kerkennah Islands	Ministry of Environment	Tunisia	2024–2025
Carbon footprint framework — PATE-IM	GIZ / CITET	Tunisia	2025-2026
Environmental diagnostic — GREEN ASSIST	Expertise France	Tunisia	2025-2026
Depollution study — PROMEDTECH plant	PROMEDTECH	Tunisia	2024
DHC feasibility — Bab Saadoun	African Dev. Bank / ANME	Tunisia	2025-2026

• IMPACT, RISK & COMPLIANCE MANAGEMENT

Project	Client	Country	Year
E&S coordination — Okouma mine, 7MT program	ERAMET / COMILOG	Gabon	2022–2023
E&S impact assessment — Algiers refinery	SONATRACH	Algeria	2020
ESMP — Road construction & modernization	Municipality of Sousse	Tunisia	2024
E&S impact assessment — Logistics zones	Transport Ministry	Tunisia	2020–2021
E&S scoping — Green hydrogen H2 NOTOS	TotalEnergies / SLR	Tunisia	2025

• WASTE, WATER & INFRASTRUCTURE SOLUTIONS

Project	Client	Country	Year
E&S safeguard instruments — Wastewater concession, North Tunis	World Bank / AGUA	Tunisia	2025
Flood protection — Lékédi river hydraulic study	ERAMET / COMILOG	Gabon	2024–2025
Master plan — Tunisian maritime ports 2040	OMMP / ARTELIA	Tunisia	2024
Hazardous waste database — SEIS SOUTH II	European Union / Plan Bleu	Tunisia	2019
Waste recovery & circular economy - El Medina district	EU / INNOMED UP	Tunisia	2021



Our Strategic Expert Partners



Mohamed Amine JEDIDI – Environmental & Sustainable Development Expert
CEO – Ryada Business Engineering
Over 15 years of experience in environmental engineering, sustainability strategies, and project management.



Mohamed Rached BEN AZOUZ – Industrial & Technological Risk Assessment Expert
CEO – 3CT Consulting
Over 30 years of experience in industrial risk assessment, safety, and technological risk management.



Mohamed Seghaier AOUN – PhD, Hydraulics & Maritime/ Fluvial Infrastructure Expert
CEO – BIPODEC
Over 30 years of experience in hydraulic engineering, port and river infrastructure design, and water resource management.



Mourad BEN OUIRANE – Industrial Building Architect & Energy Efficiency Expert
Over 20 years of experience in industrial architecture and building energy optimization.



Nabil SOUISSI – PhD, Biodiversity Expert
Associate Professor
Over 20 years of experience in biodiversity, and environmental research.



Mohamed BEN SAOUD – QHSE & CSR Expert
CEO – AMEN CONSULT
Over 20 years of experience in quality, health, safety, environment management, and corporate social responsibility

